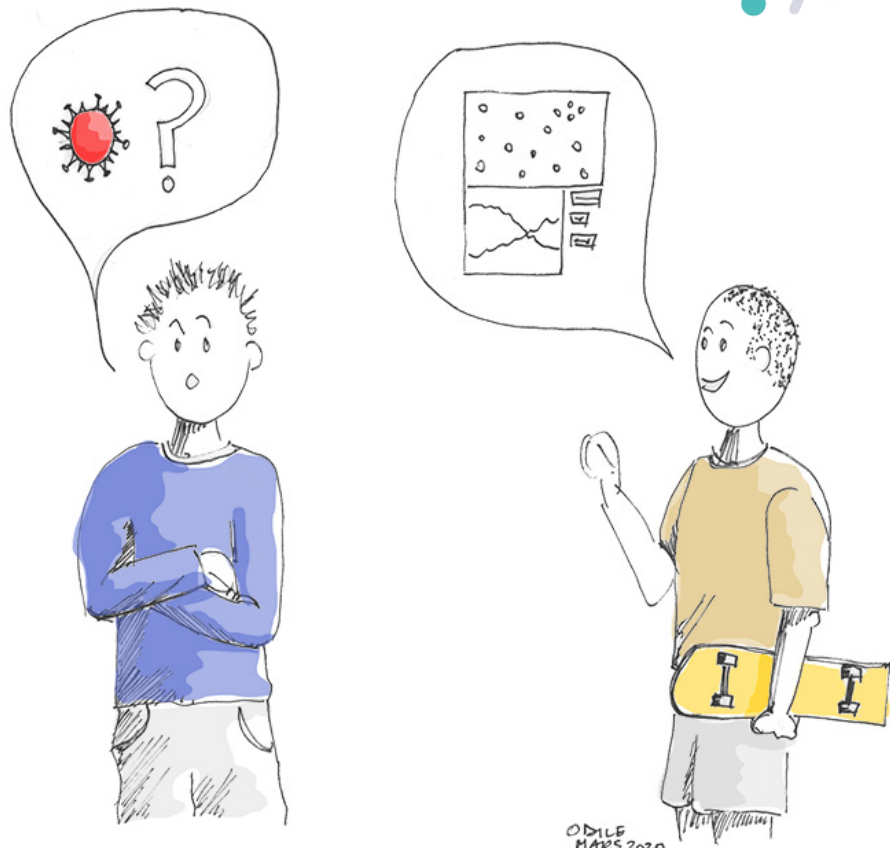


COVPREHENSION

<https://covprehesion.org/>

Exploration de modèles : outils, posture, méthodes



H. Arduin

UMR IDEES 6266

E. Delay

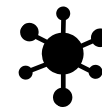
CIRAD – dir Es - GREEN

M. Leclaire

ISC-PIF

R. Reuillon

ISC-PIF

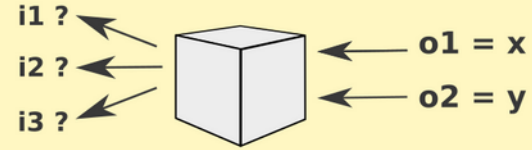


OpenMOLE : un outil omnivore

Models as
blackboxes



embeds



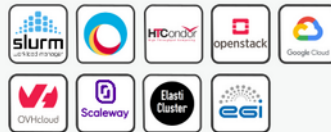
Innovative exploration
methods

provides

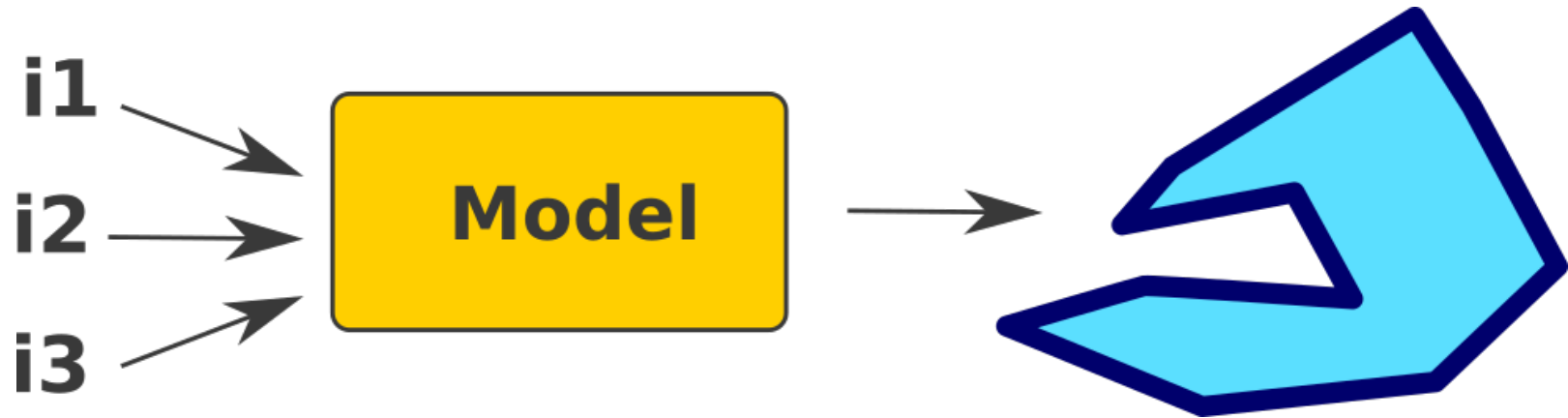
OpenMOLE
the model exploration software
<http://openmole.org>

runs on

Massively parallel
environments



Un modèle de simulation

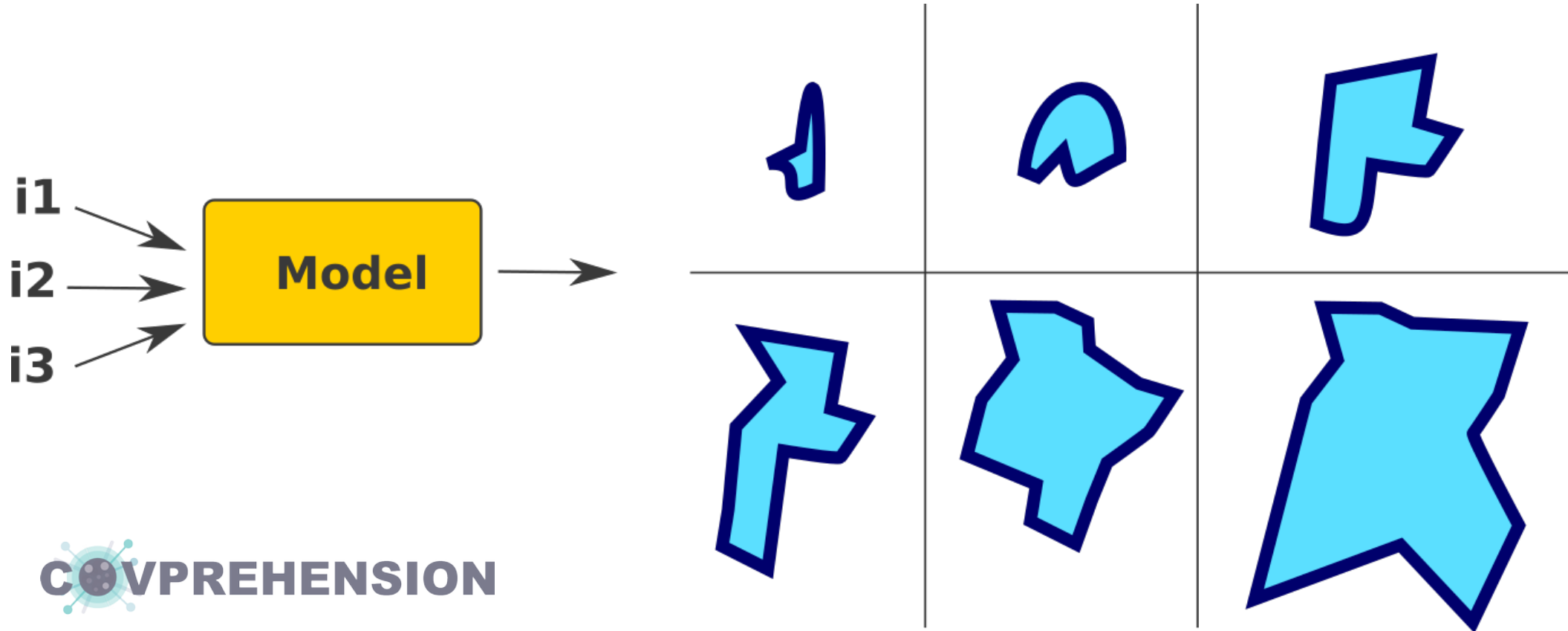


Un modèle de simulation



Un exemple de méthode d'exploration: PSE

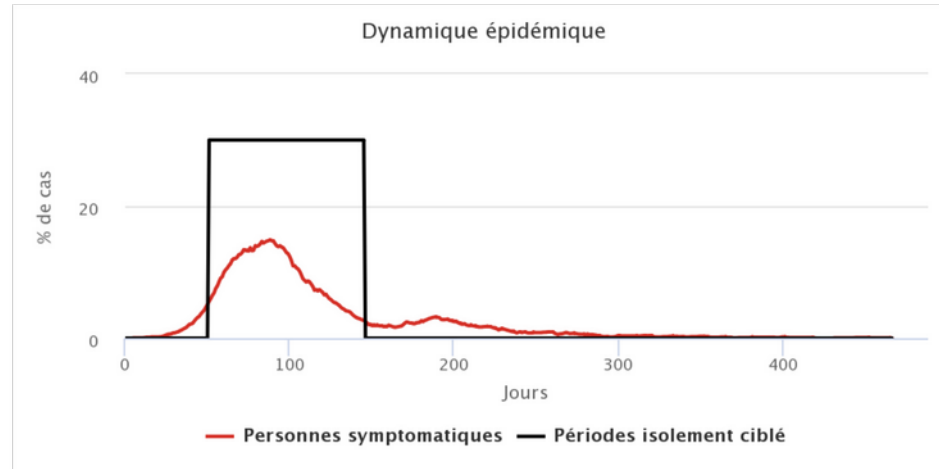
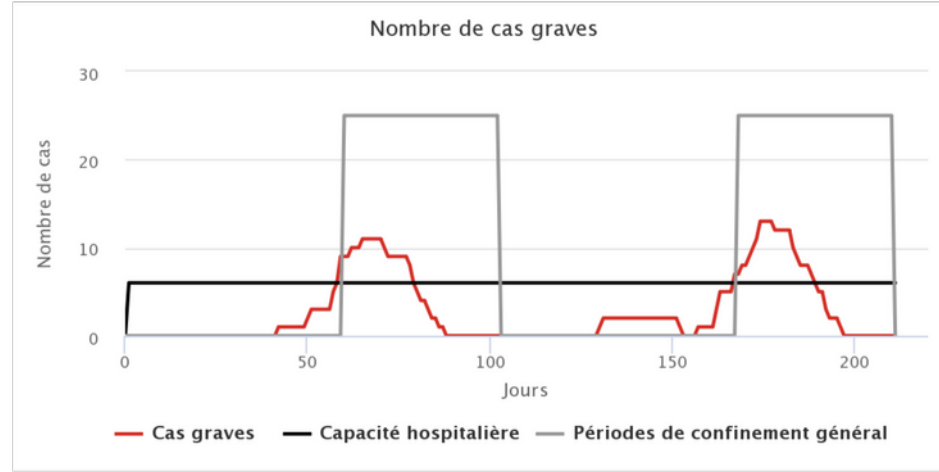
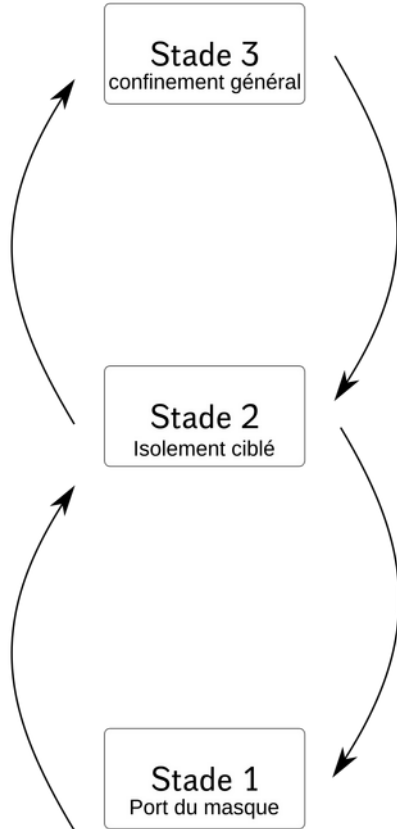
Pattern Space Exploration



Et CoVprehension dans tout ça ?

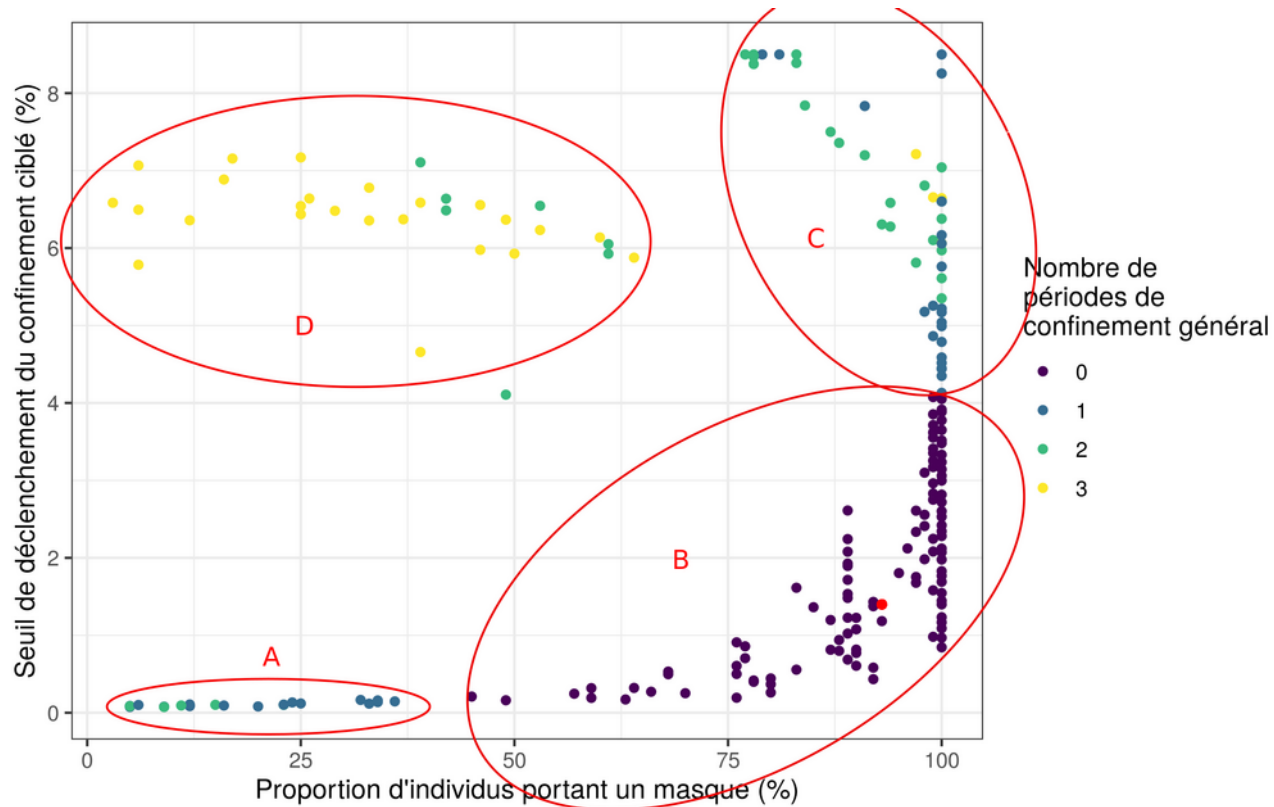
- Modèles illustratifs, relativement simples
 - Hypothèses fortes
 - Phénomènes émergents
- Enjeux de l'exploration
 - Vérifier les mécanismes
 - Aller plus loin dans l'interprétation

Q16 : Évaluer des stratégies de contrôle



Comment atteindre un objectif désirable ?

Origin Space Exploration



Ressources

🦠 Q16 CoVprehension

<https://covprehension.org/2020/04/28/q16.html>

🦠 OpenMOLE <https://openmole.org>

🦠 École thématique eX Modelo <https://exmodelo.org>

Merci !